

# Astaro Command Center Overview

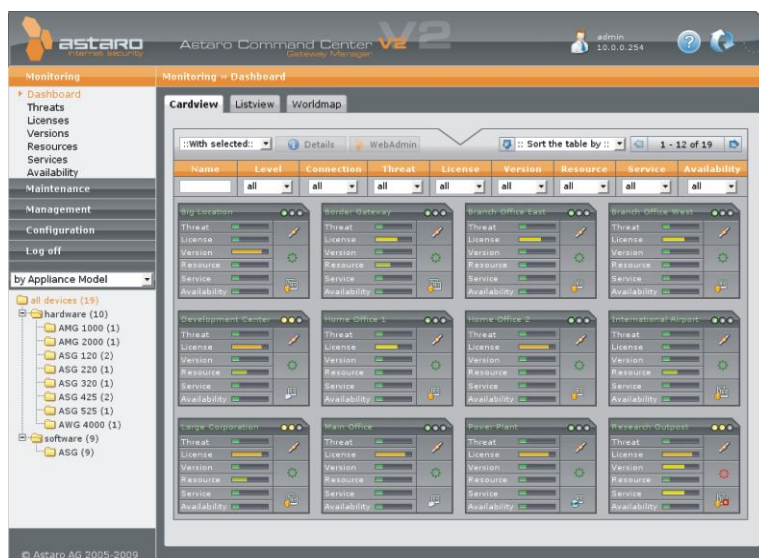


## Central Management Made Easy

Service providers and companies that have multiple Astaro installations in various locations use the Astaro Command Center (ACC) to centrally manage up to several hundred Astaro appliances. The web-based user interface provides optimal transparency in implementing company-wide security guidelines. The administrator always has an overview of important system parameters and can respond quickly through the central configuration option when critical values are indicated.

ACC V2 is available as a hardware appliance, and free of charge as software or a virtual machine, all which offer functionality such as:

- ▶ **Device Monitoring:** Monitors license status, threats, firmware/pattern versions, resource utilization, running services, network load, HA/cluster status and other system parameters in real time with an intelligent trend indicator.
- ▶ **Central Configuration:** Build and maintain IPSec VPN tunnels between supported devices, manage Up2Dates, and centrally access all connected devices with single sign-on.
- ▶ **Multi-Client Access:** User-specific views and access rights allow managed service providers to administer multiple, separated client networks from a single ACC device.



ACC Dashboard

## Benefits

### Comprehensive Security

- ▶ Central threat-level monitoring
- ▶ IPSec VPN Tunnel creation and status monitoring
- ▶ Real-time Up2Date status check
- ▶ Central cache for patterns
- ▶ Granular user roles management
- ▶ Baseline deviation monitoring

### Easy to Manage

- ▶ Web-based (without Java or Flash) Interactive GUI
- ▶ Integration into existing Active Directory & eDirectory, LDAP, RADIUS, TACACS environments
- ▶ Comprehensive dashboards graphically illustrate status of connected devices
- ▶ Detailed views for specific categories like threats, site-site tunnel status, or system load
- ▶ Single sign-on allows rapid access to Astaro Gateway appliances
- ▶ Simple integration for existing environments
- ▶ Complete inventory list in real-time

## The Astaro Difference

- ▶ Only Astaro keeps central management simple. The entire user interface is web-based.
- ▶ No software installation or Java/Flash extensions on the clients are needed, which makes integration into existing infrastructures purely plug and play.
- ▶ Nobody is faster: With the "Astaro Quickstart", every gateway connection is accomplished in moments, without complex joining procedures.





Astaro Command Center **1000**



Astaro Command Center **2000**



Astaro Command Center **3000**



<b>Max. Gateway Amount</b>	up to 20	up to 50	up to 100
<b>Administrators*</b>	1	2	3
<b>Clients*</b>	4	10	20

<b>Supported Gateways</b>	ASG, AMG, AWG	ASG, AMG, AWG	ASG, AMG, AWG
---------------------------	---------------	---------------	---------------

<b>Functionality</b>			
Central Monitoring	yes	yes	yes
Central Configuration	yes	yes	yes
Central Maintenance	yes	yes	yes
Multi-Client Capability	yes	yes	yes
Directory Service Integration	yes	yes	yes

<b>System</b>			
System Storage	30 GB	30 GB	30 GB
Log/Reporting Storage	40 GB	40 GB	40 GB
10/100/1000 Mbps Ethernet Ports	2	2	4
Form Factor	1U rack-mount	1U rack-mount	1U rack-mount

*\*Admin with full-access, client with access to an average of 5 Gateways and 1/3 of the clients simultaneously logged in*

» Astaro was different from the competition.  
 Astaro's technology can be managed with minimum effort. «

Tim Smith, Director of Information Systems  
 Ohio State University



# Astaro Command Center Overview

## Astaro Command Center 4000

## ACC Virtual & Software Appliance

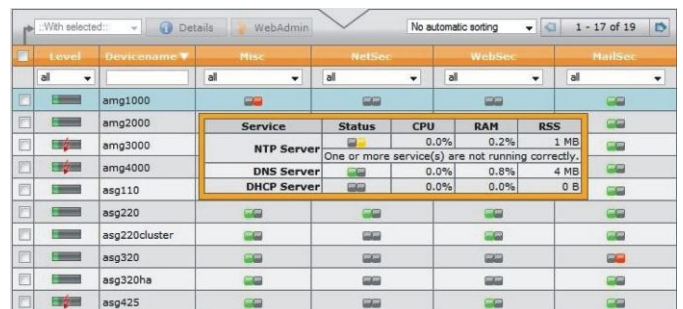


up to 200	**
4	**
40	**
ASG, AMG, AWG	ASG, AMG, AWG
yes	yes
yes	yes
yes	yes
yes	yes
yes	yes
60 GB***	**
80 GB***	**
4	**
1U rack-mount	**

## Service Monitoring

The Service Monitor allows monitoring of the most important services on the connected Gateways. A quick overview provides information on the current status in the areas "Web" (FTP and HTTP proxy), "Mail" (SMTP and POP3 proxy), "Net" (SOCKS proxy and Intrusion Protection), and "Misc" (NTP, DNS, DHCP servers).

The detail view provides additional information on the CPU and RAM use by service, thus making it possible to detect problems or faulty configurations in time.



Status information on all services

## Multi-Client Capability

Managed service providers like to use the multi-client capability, especially those who want to manage the Astaro Gateways of several customers via a single ACC appliance and also enable limited access to the ACC. Here every customer receives individual access rights with individual roles for their own Gateways.

According to these roles and the distribution of rights, it is also possible to directly access the administrative user interface of the Gateways via single sign-on.

\*\*Depending on hardware platform used      \*\*\*RAID hard disk system

## Management Features - Details

### Real-Time Monitoring

#### Threats

- ▶ Infringements of packet filter rules
- ▶ IPS attacks, port scans, failed login attempts, virus and spyware attacks
- ▶ Monitoring of the spam rate

#### License Information

- ▶ Active and maximum permitted number of users and connections
- ▶ License status and license ID
- ▶ Remaining period for each subscription

#### Version Control

- ▶ Installed firmware and pattern versions
- ▶ Initiation of firmware and pattern updates
- ▶ Prefetch control
- ▶ Monitoring of the update process

#### Resources

- ▶ System load
- ▶ CPU load (total)
- ▶ CPU load by core
- ▶ RAM and Swap allocations
- ▶ Hard drive allocations for all partitions

- ▶ Network card load
- ▶ HA/Cluster status

#### Services

- ▶ Display of activated and deactivated services
- ▶ Monitoring of functions in the segments:
  - ▶ Network Security: SOCKS proxy, Intrusion Protection
  - ▶ Web Security: FTP and HTTP proxy
  - ▶ Mail Security: SMTP and POP3 proxy
  - ▶ NTP, DNS and DHCP servers
  - ▶ CPU load by service
  - ▶ RAM load by service

#### Inventory Management

Inventory lists with hardware information on all devices:

- ▶ Device type
- ▶ Processor
- ▶ RAM
- ▶ Hard drive
- ▶ CD ROM
- ▶ Network cards

#### Device Maintenance

Timed execution of tasks:

- ▶ Up2Date Prefetch
- ▶ Firmware installation
- ▶ Pattern Installation

- ▶ Restart
- ▶ Shutdown

#### Access Management

##### User Rights

- Granular assignment by customer, user and gateway:
- ▶ No access
  - ▶ Monitoring: access to general overviews
  - ▶ Maintenance: access also to the inventory overview as well as administration of routine tasks
  - ▶ Configuration: can perform configuration tasks
  - ▶ UserAdmin: user rights administrator for selected devices

##### Directory Service

##### Integration

- Authentication of all ACC users via directory services:
- ▶ eDirectory, Active Directory, RADIUS, TACACS+ and LDAP
  - ▶ Secure single sign-on (SSO) access to all devices (without additional login prompting)

### Reporting

Daily, weekly, monthly and yearly overviews of:

- ▶ Hardware and network capacity
- ▶ Network security of ACC
- ▶ Automatic transmission as an executive report via email

#### Detailed Views

- ▶ Map/list views and an interactive world map with automatic location detection
- ▶ A complete overview of all connected Gateways
- ▶ Granular filter and sorting options
- ▶ Trend indicators provide information of critical system parameters over time

#### Central VPN Configuration

- ▶ Build site-to-site IPsec VPN tunnels
- ▶ Wizard for tunnel creation
- ▶ Edit/Delete deployed tunnels
- ▶ Fully contained within ACC

## 24x7 Service Offerings

### Support

Award-winning customer support offerings include 24x7 technical assistance and expedited appliance replacement.

### Security Response

Subscriptions to Astaro's 24x7 Up2Date Security Response Service keep networks protected and secure at all times.

### Training

To maximize administrator productivity, free, self-paced training is available on the web along with regularly-scheduled live seminars.

### Online Resources

Access a wealth of information about Astaro products, offerings, research and support tools through our collection of online resources.

## Contact Astaro

Download your free copy of the Astaro Command Center software at <http://www.astaro.com/download/acc> or contact Astaro at:

#### Europe, Middle East, Africa

Astaro AG  
Amalienbadstrasse 36  
76227 Karlsruhe  
Germany

T: +49 721 255 16 0  
F: +49 721 255 16 200  
emea@astaro.com

#### The Americas

Astaro Corporation  
260a Fordham Road  
Wilmington, MA 01887  
USA

T: +1 978 974 2600  
F: +1 978 974 2626  
americas@astaro.com

#### Asia Pacific Region

Astaro K.K.  
12/F Ark Mori Building  
1-12-32 Akasaka Minato-ku  
Tokyo 107-6012, Japan

T: +81 3 4360 8350  
apac@astaro.com



[www.astaro.com](http://www.astaro.com)

### Your Astaro Solutions Partner